



WORKSHEET

for lower grade levels

Most of these questions can be answered by observing our animals closely and reading the information screens. Some questions require a bit of prior knowledge and critical thinking. It is up to the educators whether pupils should complete the entire worksheet or only select portions.

Please follow the zoo rules! Students must remain within view of the adult(s) supervising them!

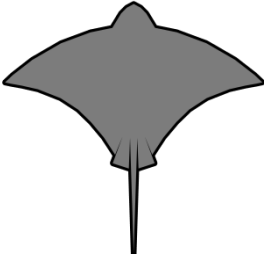
Have fun looking for our animals, observing them and working out the worksheet answers!

We are always trying to improve our worksheets and would be very happy to receive your feedback!
Please send us a message at guides@haus-des-meeres.at

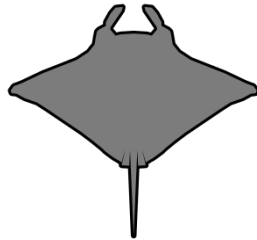
Ground floor: Atlantic Tunnel

The Atlantic Tunnel is the largest tank in the Haus des Meeres, with 500,000 liters of saltwater. There are **three different types of rays**. Look closely at the shape of our rays in this tank. Which **two** of the shapes below look like our rays? **Circle the two types of rays**.

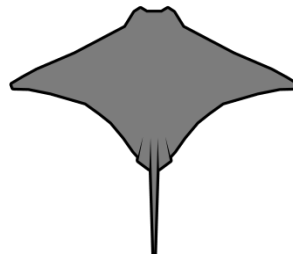
Eagle ray



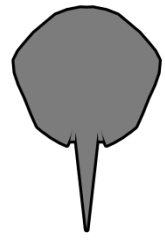
Manta ray



Cownose ray



Blue-spotted ray



Ground floor: Koi tank

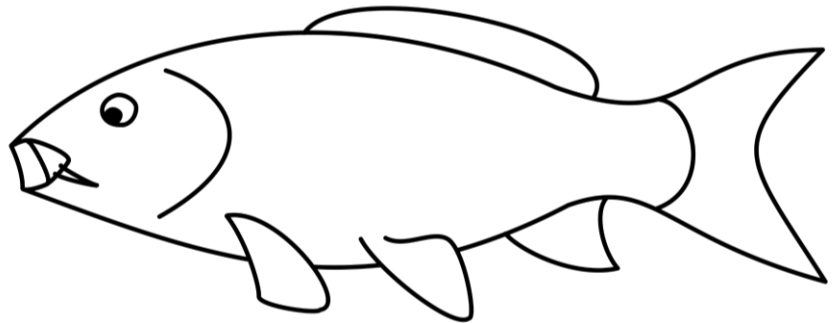
What colors are our koi? Be brave and pet the koi in this tank, **then mark below how they feel to the touch**.

Our koi feel:

- fluffy
- slippery
- rough
- hard

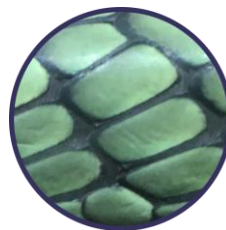
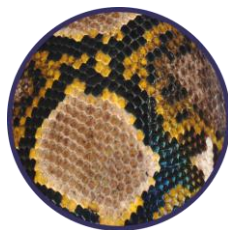
Depending on their coloration and patterning, some koi can cost up to €500,000!

Color in the pattern of your favorite koi.



1st Floor: Pythons

Which patterns do our pythons have? **Mark the correct circle**.



2nd Floor: Jellies

How do our cannonball jellies catch their prey?

- with their venomous tentacles
- they bite down suddenly
- they grab prey with their strong arms



3rd Floor: Coral reef tank

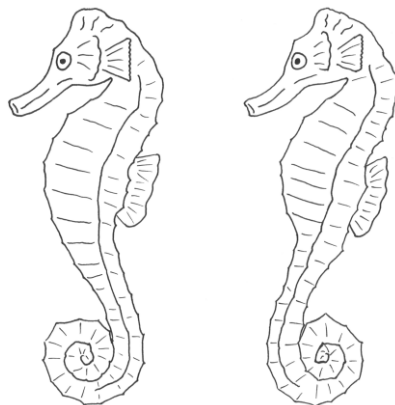
In this photo, the clownfish is looking out from inside an anemone, where it is protected from its enemies. **Look closely at the clownfish in the tank and write down how many stripes they have.**



A clownfish has ____ stripes.

4th Floor: Seahorses

Seahorses are, in fact, fish, even though they may not look like it. If you take a closer look, you can still see their fins; however, they are quite small and not very good for swimming. Seahorses spend most of their time well-hidden, tightly holding onto plants and corals with their tails. In which direction does their tail curl? **Mark the correct picture.**



4th & 5th Floor: Shark tank

Who is this in the photo? Write down the name of the animal species (type) and also the nickname for this exact animal if you can. Clue: look at the information screen.

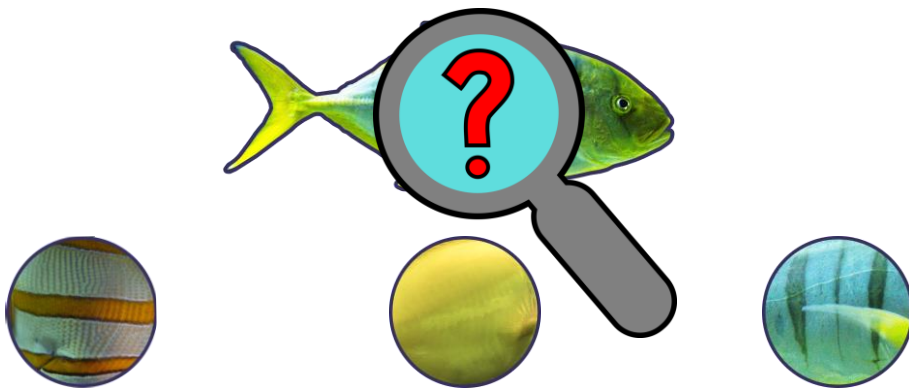
This animal is a _____,

and we call her _____.



4th and 5th Floor: Shark tank

In this tank you'll find a number of golden trevallies. Have a look and then mark which pattern they have. Clue: the smaller and younger they are, the bolder the pattern is.



6th Floor: Native fish

Only one of these three fish lives in freshwater in Austria. The other two live elsewhere in saltwater. Mark which fish you can find here in this freshwater tank.



Yellow tang



Sterlet



Blue surgeonfish

7th Floor: Gila monsters

What do gila monsters do the most?

- climbing
- sleeping
- swimming

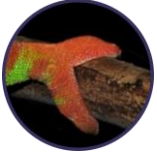


8th Floor: Chameleon

Chameleons are perfectly suited for life in the trees. Their feet are especially well-adapted to tightly hold to branches. Look closely at their feet and **mark the correct answer!**



1. They have claws for climbing.



2. Their toes are like tongs for grabbing.



3. They have suction cup toes for holding onto trees.



8th Floor: Grotto

Our cave tetras are fish. They spend their whole lives in caves and are perfectly adapted to life in the dark.

They therefore have:

- No eyes → They don't need eyes. They can sense their surroundings with their lateral line organ.
- Two eyes → So they can see, especially if it gets a little lighter.
- Six eyes → With more eyes they can see better, even when there isn't much light.

9th Floor: Komodo dragons

Komodo dragons can grow up to 3 meters in length and are therefore the largest living lizards in the world. There are many stories about them, but which ones are true?

Mark the true statements:

- Komodo dragons have an incredible sense of smell.
- They can swallow bones whole.
- They only eat plants.
- Komodo dragons are venomous.
- Their tongues have three tips.



10th Floor: Caribbean hammerhead shark tank

Hammerhead sharks have a broad head that helps them better sense their prey. They get their name from the shapes of their heads. **Take a good look at the hammerhead sharks and mark which picture resembles the sharks most.**



Super! You did it!

But there's still a bit of space left. Draw the animal from Haus des Meeres that you liked the best on your visit.

My favorite animal at the Haus des Meeres

A large, empty rectangular box with a blue border, intended for drawing the favorite animal from Haus des Meeres.